

GMS Sharqi is a self-propelled jackup barge that provides stable platform for the delivery of a wide range of services throughout the total lifecycle of offshore oil, gas and renewable energy activities.

**Key advantages of GMS Sharqi over conventional barges include:**

- **Independent:** Dynamic Positioning (DP2) allows the vessel to move under her own power with high accuracy positioning alongside a platform.
- **Fast:** The vessel can move faster than conventional jackups between locations due to higher transit speeds of six knots and by not requiring anchor deployment.
- **Flexible:** GMS is both builder and operator and can adapt/configure the vessel to clients' requirements, with the vessel able to move easily between oil and gas operations to wind farm installation and maintenance contracts.
- **Safe:** Day-to-day work is free from the added hazards a moving vessel introduces. A safer working environment for large numbers of offshore workers.
- **Comfortable:** The four-legged design provides a stable platform for those living on board; the efficiency of a man well-rested in a stable bed is greater than someone trying to sleep on a moving vessel (for crew and non-seafarers).
- **Convenient:** Two gangways installed in combined operations provide an effective solution for top side maintenance on a smaller platform.
- **Cost effective:** The weather window for a conventional jackup barge to move in-field is an average of three days; GMS Sharqi can do it in a few hours. No need for tug support/anchor handling. Fuel-efficient.

**Main Particulars**

LOA	56 m
Beam	32 m
Depth	5.5 m
Draft	3.5 m
Variable Load	1245 t
Deck Area	800 m <sup>2</sup>

**Propulsion and Generators**

Generator Sets	4 x 1380 kW
Emergency Generator	1 x 400 kW
Azimuth Thrusters	2 FWD + 2 AFT
Speed	6 Knots
Kongsberg Dynamic Positioning	DP2

**Accommodation**

Single Cabins	4
Two Berth Cabins	9
Four Berth Cabins	32
Total POB	150
Hospital	
Offices	
Conference Room	

**Deck Machinery**

Main Crane	150 t @ 15 m
Auxiliary Crane	15 t @ 25 m
Deck Strength	5 t / m <sup>2</sup>

**Jacking System**

Jacking Units per leg	12
Jacking Speed	0.8m / min
Effective lifting capacity per leg	1080 t
Pre-Load holding capacity per leg	1800 t

**Leg Design**

Legs	4x Triangular Truss Design
Leg length	75 m
Max Water Depth	55 m
Spudcans	30m <sup>2</sup> each

**Safety Equipment**

Lifeboats	2 x 150 man
Life rafts	12 x 25 man
Rescue boat	6 persons

**Helideck**

D Value	22.2 m
Aircraft	S61N + S92

**Gulf Marine Services**

**UAE**

Mussafah Base  
P.O. Box 46046  
Abu Dhabi, United Arab Emirates  
Ph: +971 2 5028888; Fax: +971 2 5553421  
Email: gmsmena@gmsuae.com

**UK**

36 Abercrombie Court, Prospect Road  
Arnhall Business Park, Westhill, Scotland  
AB32 6FE, United Kingdom  
Ph: +44 (0) 1224 737200; Fax: +44 (0) 1224 737239  
Email: gmsuk@gmsuae.com

**Commercial**

Mr. Mark Preston  
Commercial Director  
Ph: +971 2 5028810  
Email: chartering@gmsuae.com

**Operations**

Mr. Simon Cook  
Chief Operating Officer  
Ph: +971 2 5028740  
Email: operations@gmsuae.com

Specifications provided in good faith but without guarantee and are subjected to change without prior notice.

[www.gmsuae.com](http://www.gmsuae.com)



**GMS SHARQI 5603**

**SELF-PROPELLED SELF-ELEVATING ACCOMMODATION JACKUP BARGE**



**Operator**

Gulf Marine Services

**Class**

A1, Self-Elevating Unit + AMS + ACCU + DP2

**Builders**

Gulf Marine Services Abu Dhabi

**Delivery**

2016

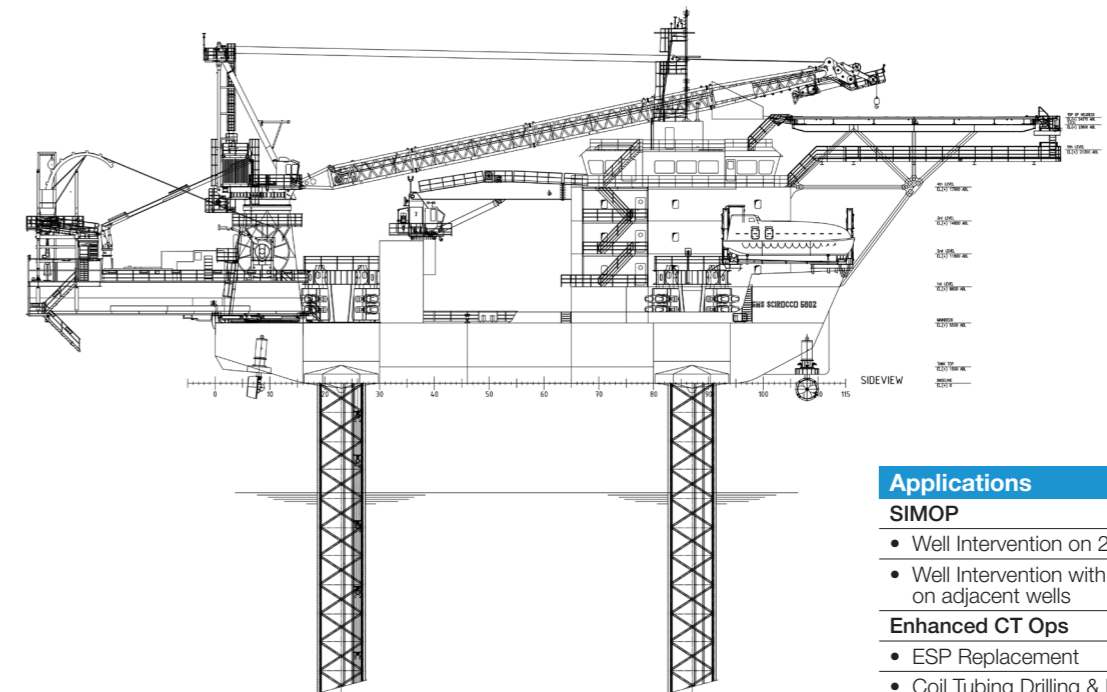
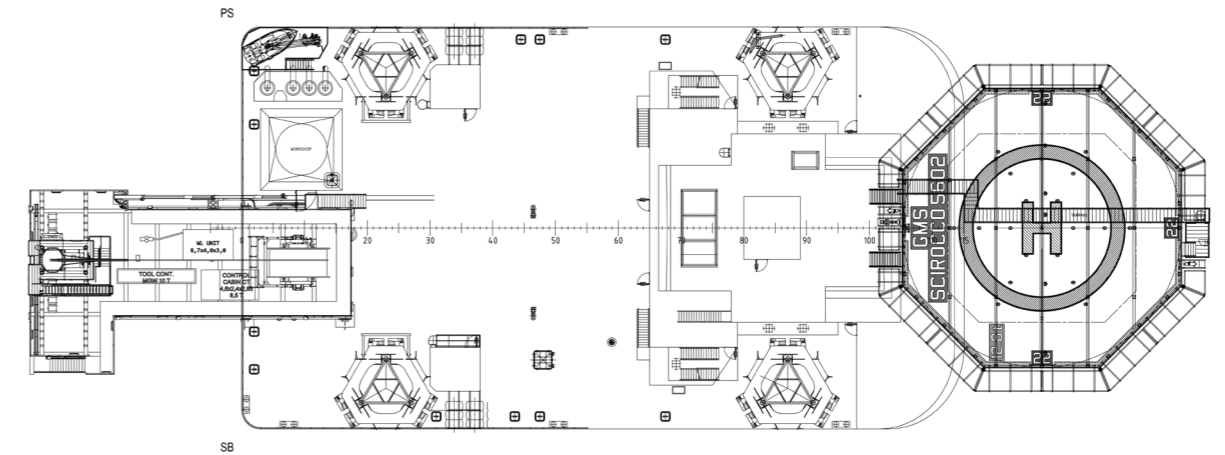
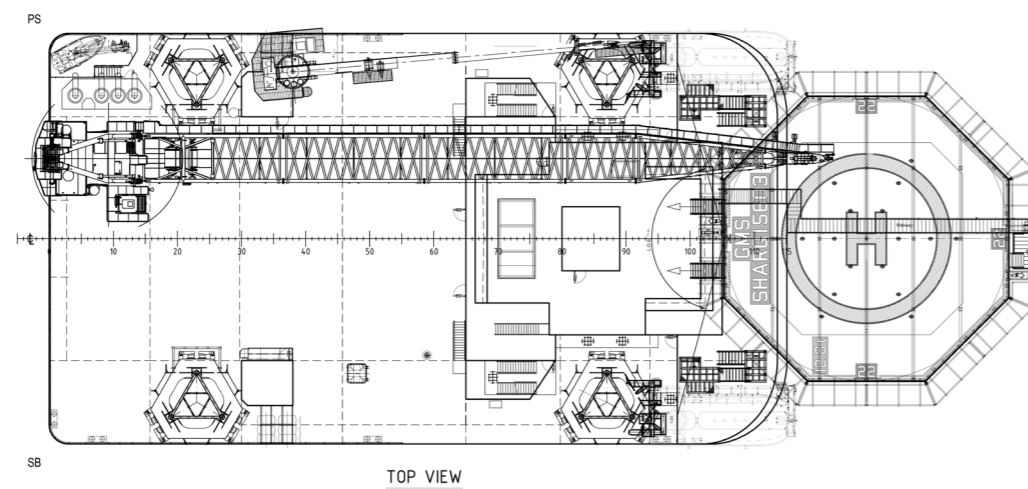
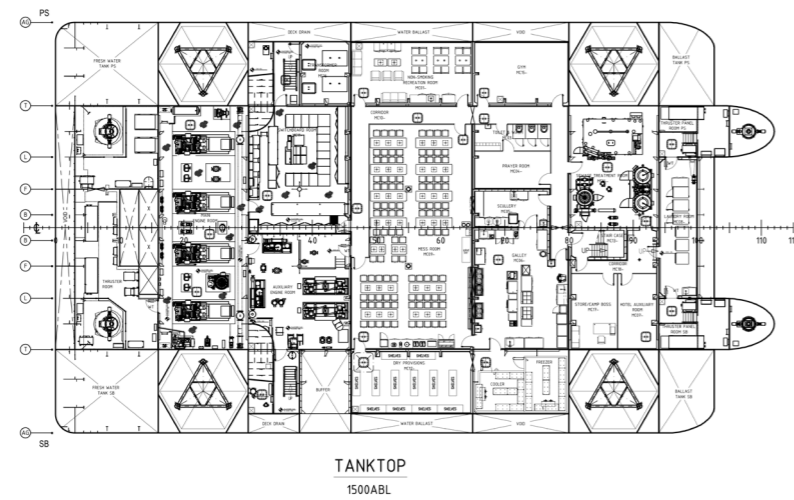
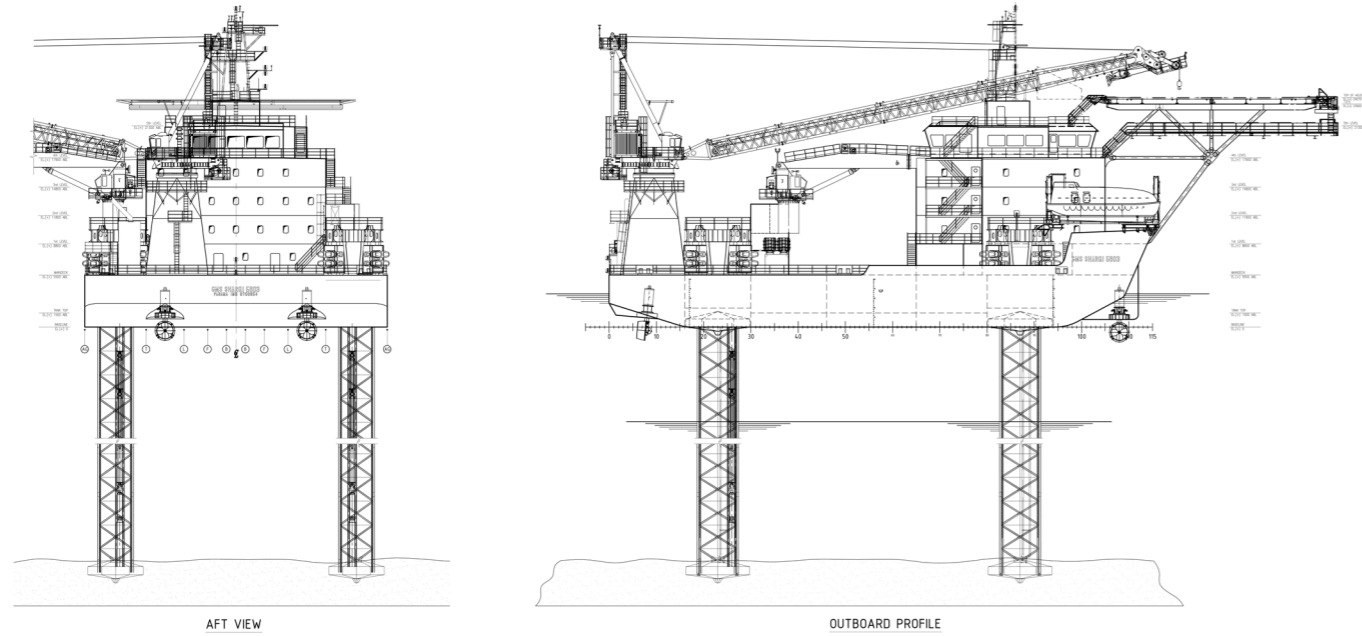


# GMS SHARQI 5603

## SELF-PROPELLED SELF-ELEVATING ACCOMMODATION JACKUP BARGE

### CANTILEVER OPTION

Description	Imperial	Metric
Cantilever Main Skidding Range	49 ft	15 m
Transverse Skidding (Skid Frame)	26 ft	8 m
Length of Cantilever	89 ft	27 m
Width of Cantilever	28 ft	8,5 m
Height of Cantilever: External/Internal	11.5 ft / 9.8 ft	3.5 m / 3 m
Load Capacities		
CT Reel/ Power Stand	220 KLbs	100 t
Cantilever Mid/ Lay down Area	88 KLbs	40 t
Work Deck Area/ Well Access	220 KLbs	100 t



#### Applications

##### SIMOP

- Well Intervention on 2 well on adjacent wells

##### Enhanced CT Ops

- ESP Replacement
- Coil Tubing Drilling & Milling

##### Well Intervention on Platforms with Structural Integrity issues